

FLOOR PLANS

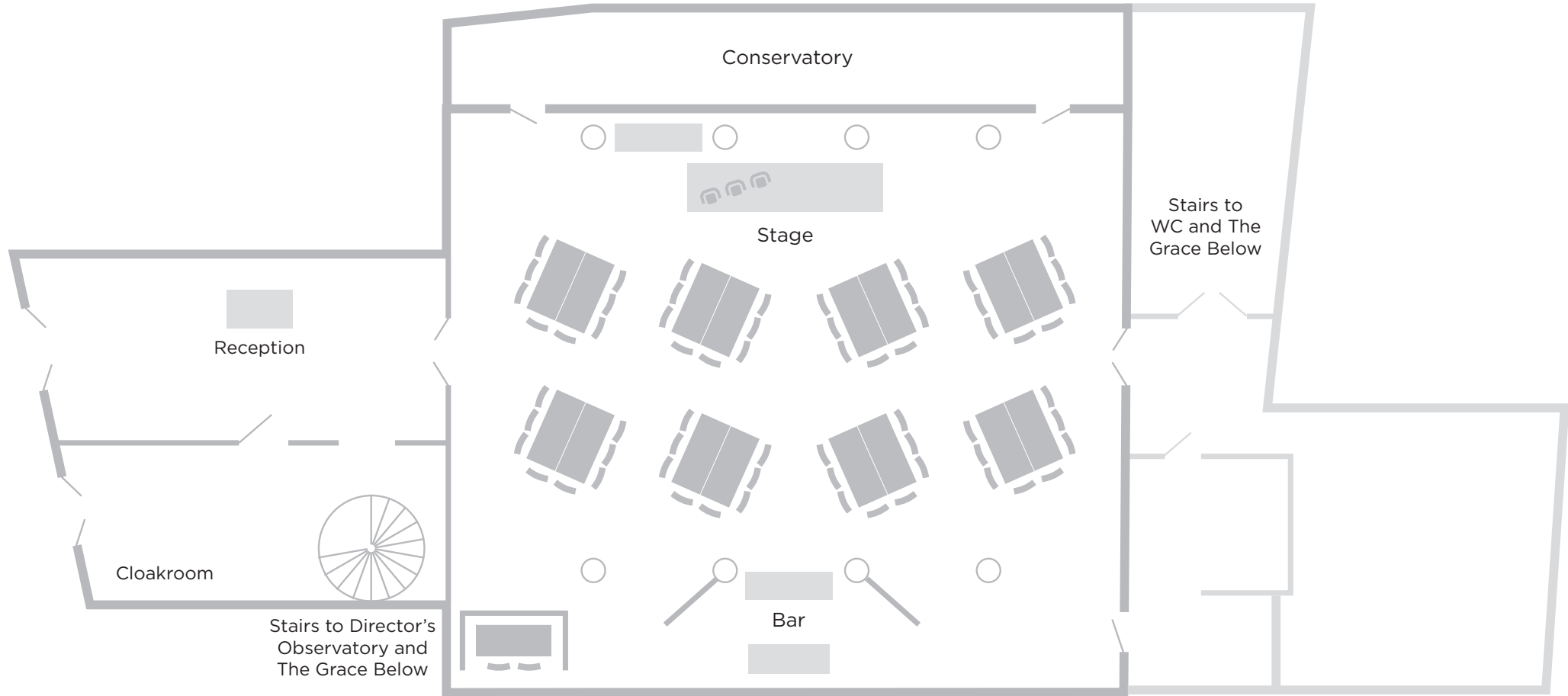


GRACE HALL
LEADENHALL

/ CAMM & HOOPER

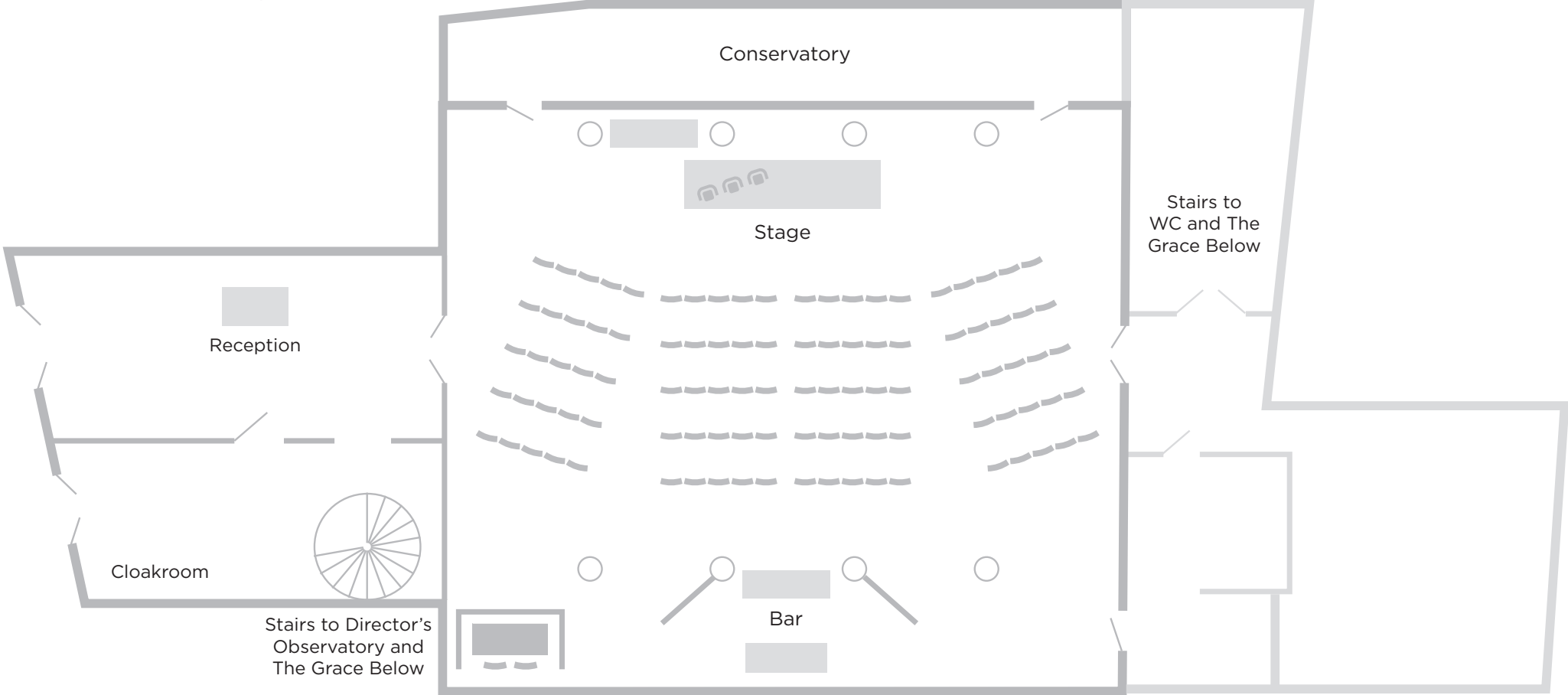
MAIN HALL - CABARET STYLE

Based on 64 guests



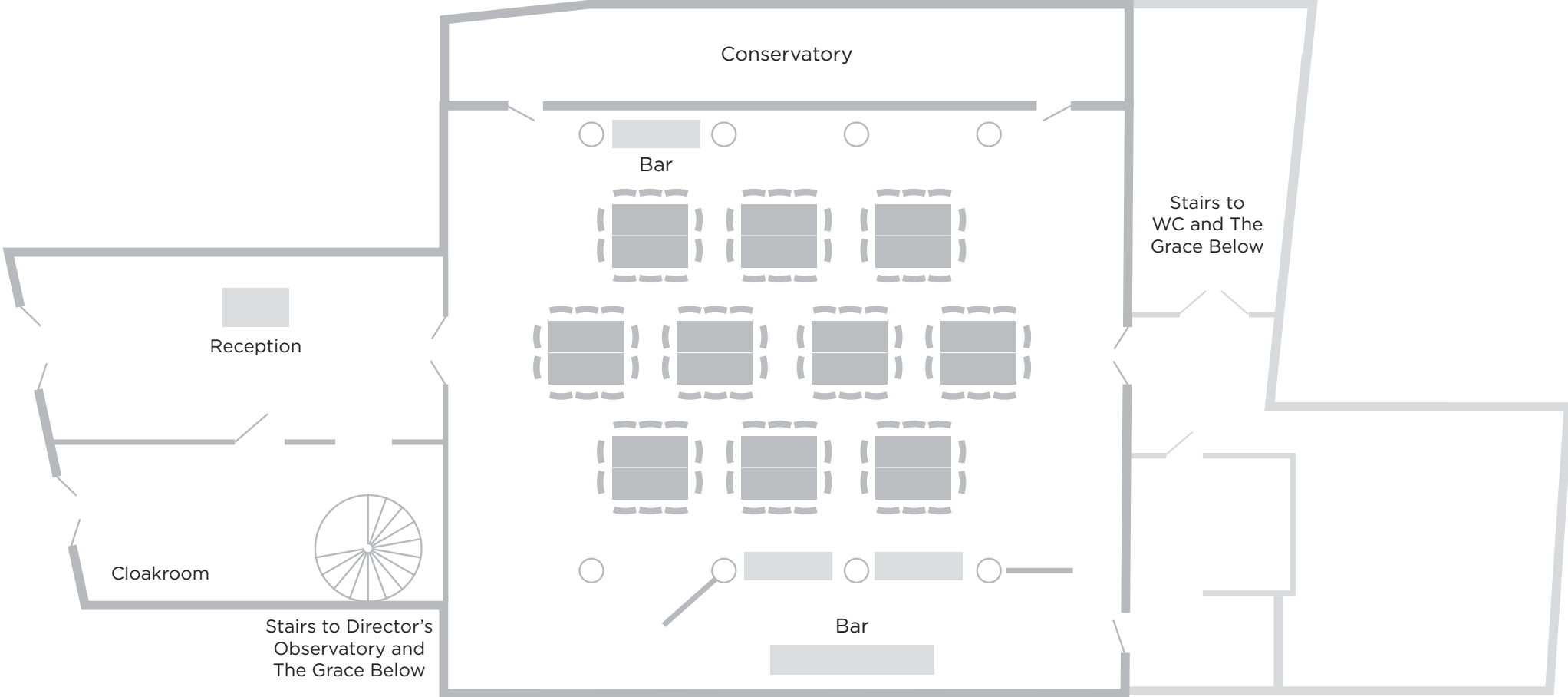
MAIN HALL - THEATRE STYLE

Based on 100 guests



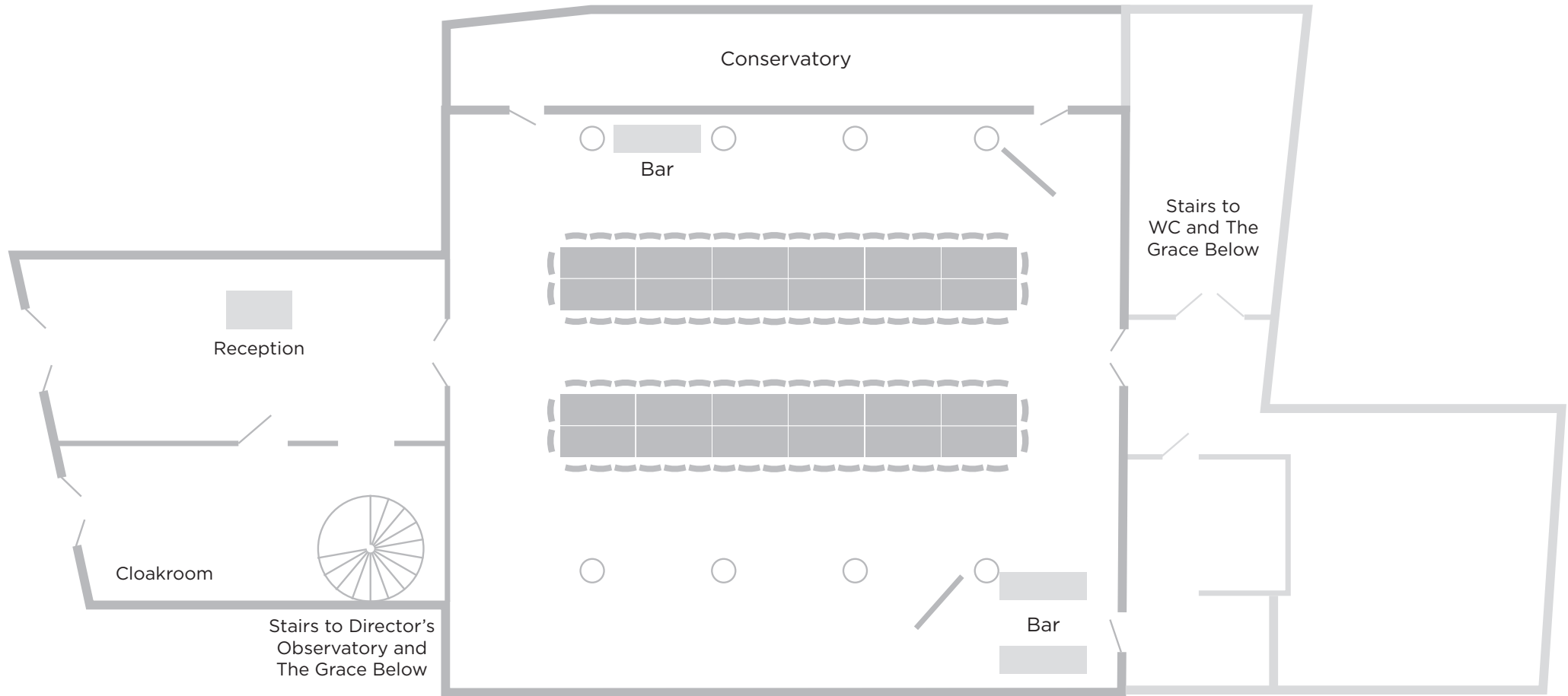
MAIN HALL - DINNER

Based on 100 guests



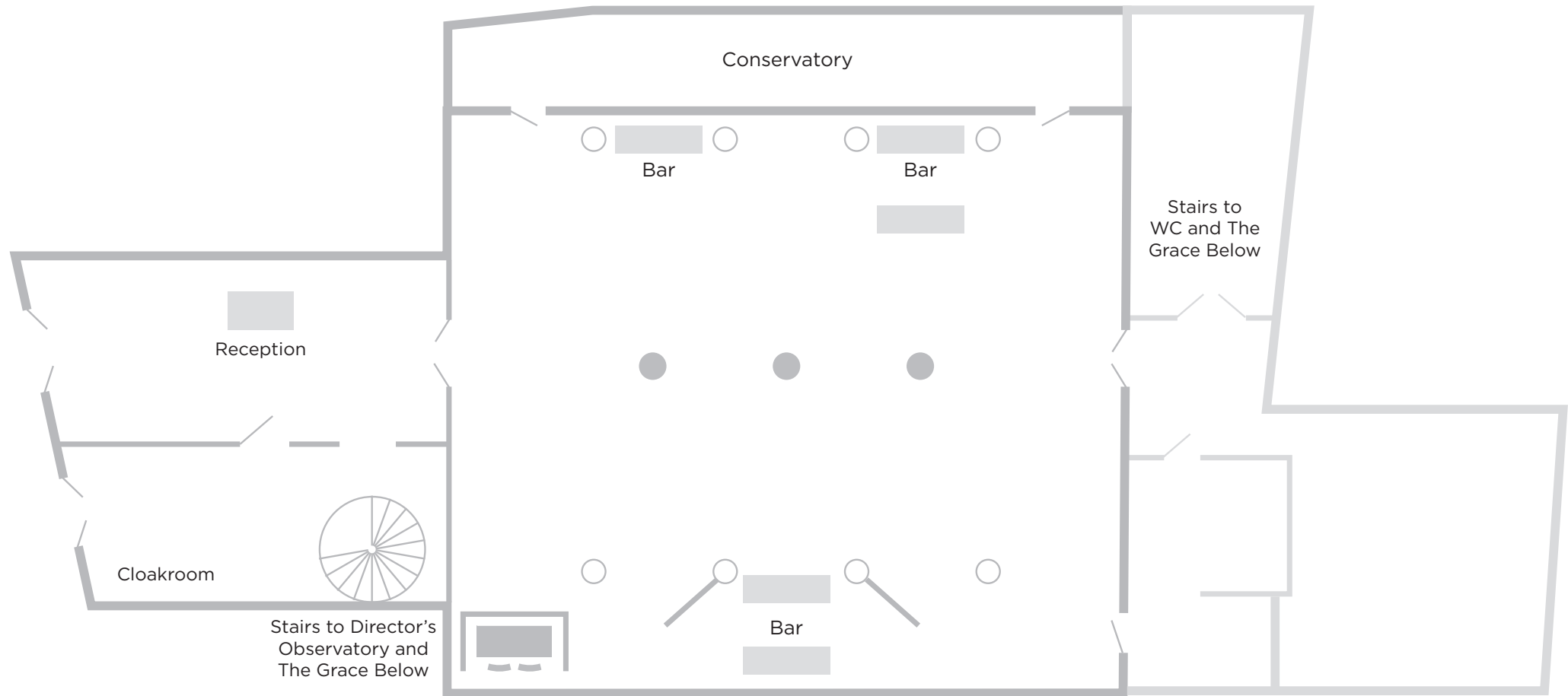
MAIN HALL - BANQUET

Based on 80 guests



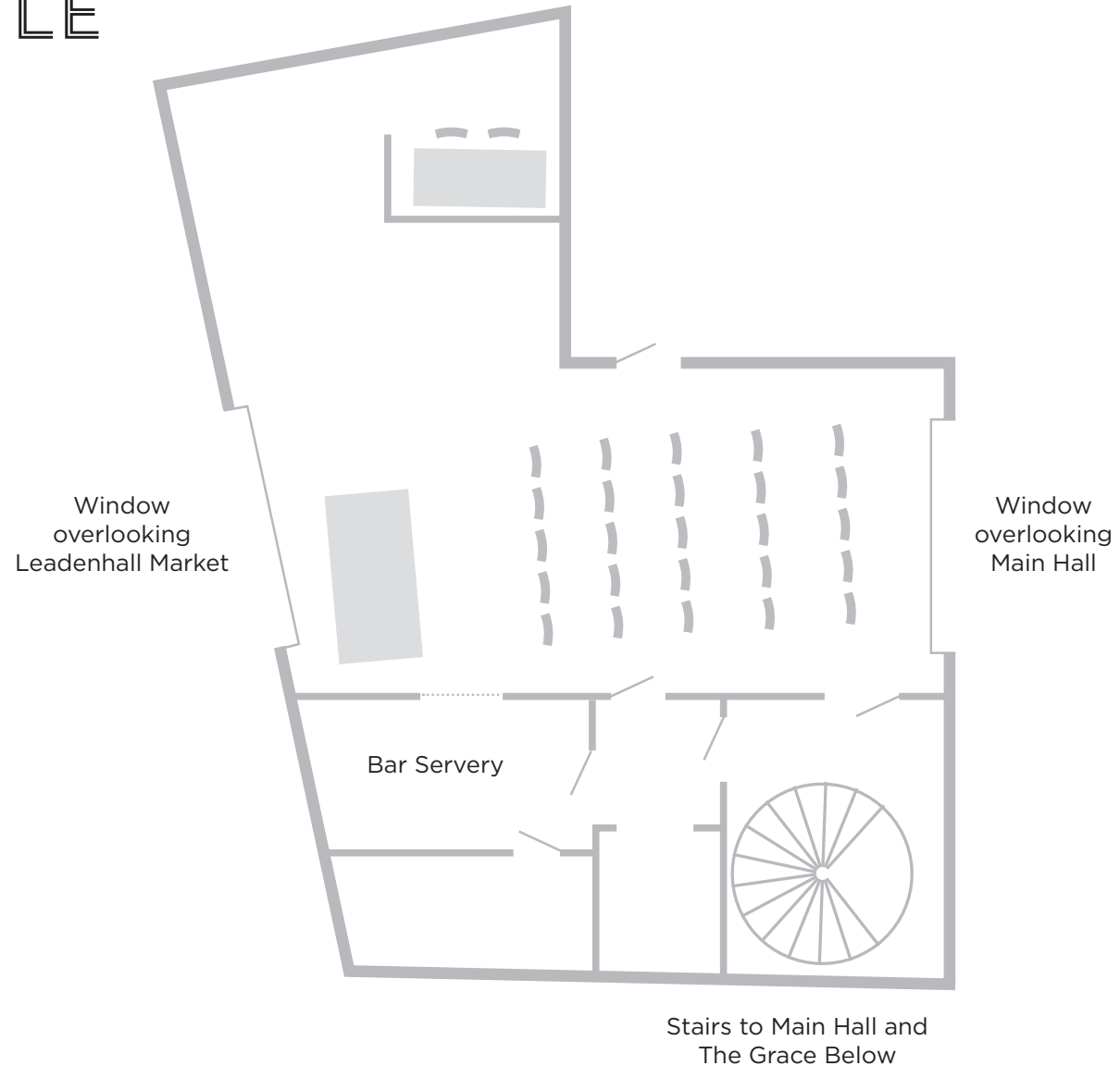
MAIN HALL - RECEPTION

Based on 350 guests



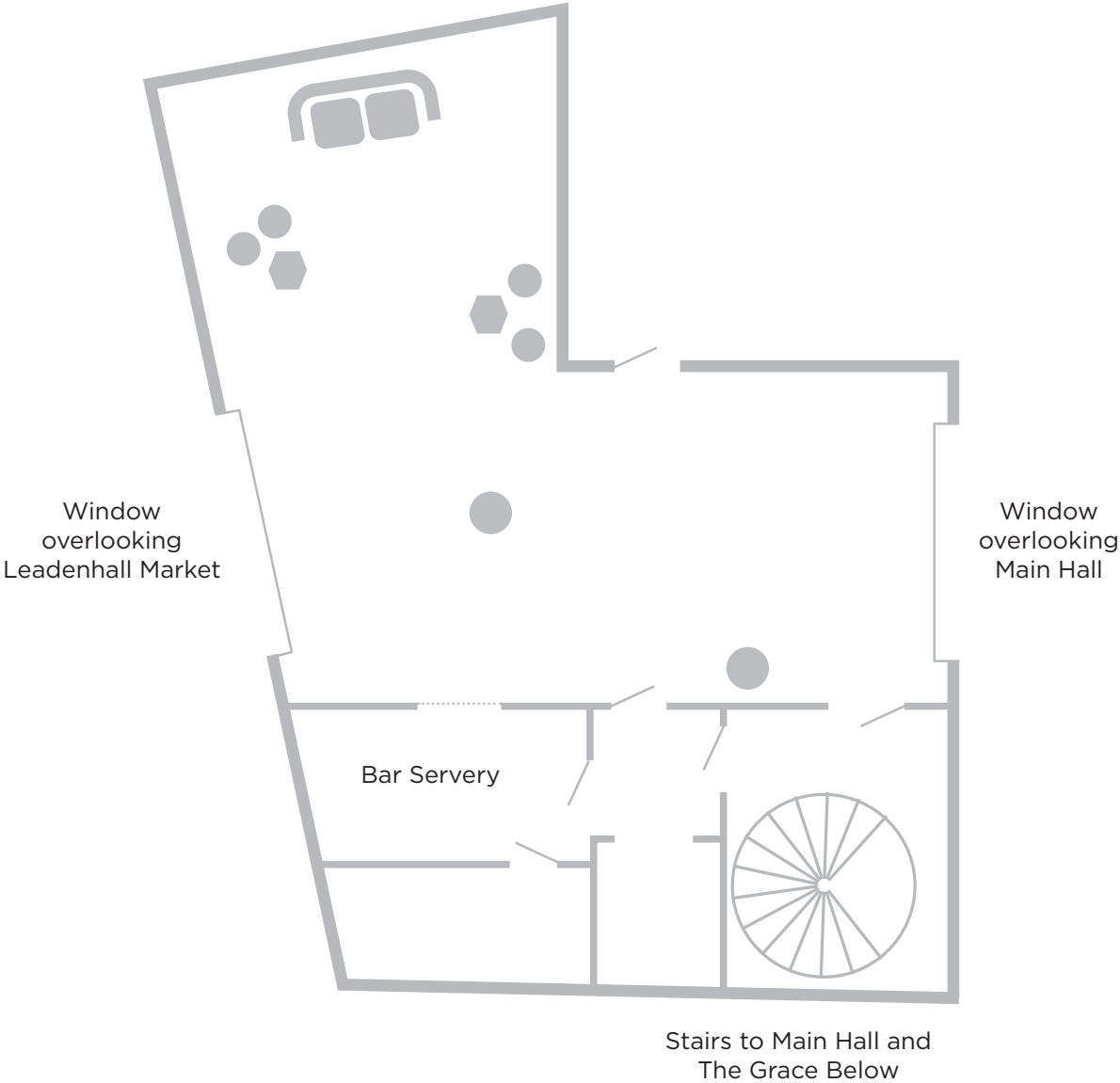
DIRECTOR'S OBSERVATORY - THEATRE STYLE

Based on 25 guests



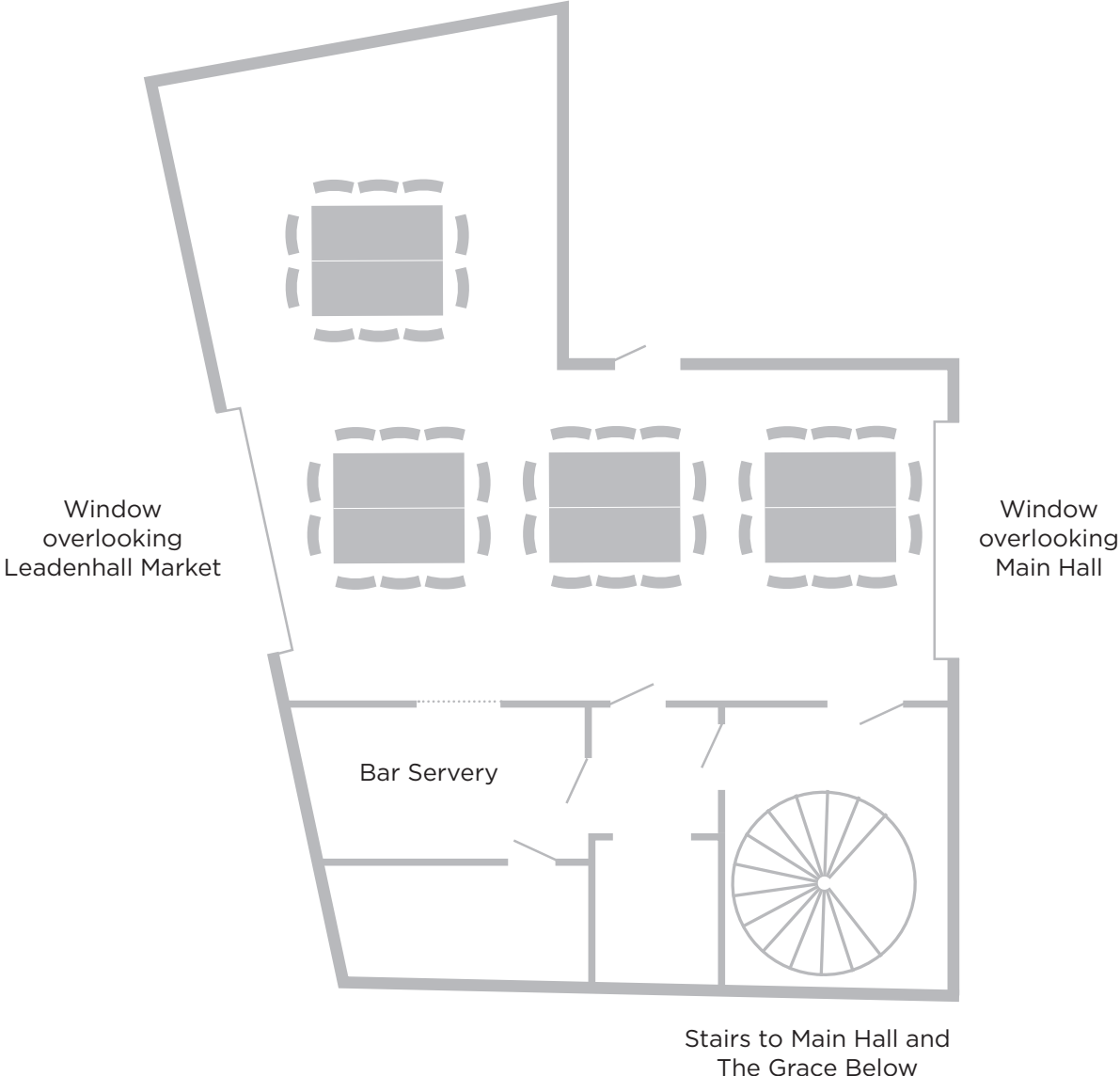
DIRECTOR'S OBSERVATORY - RECEPTION

Based on 80 guests



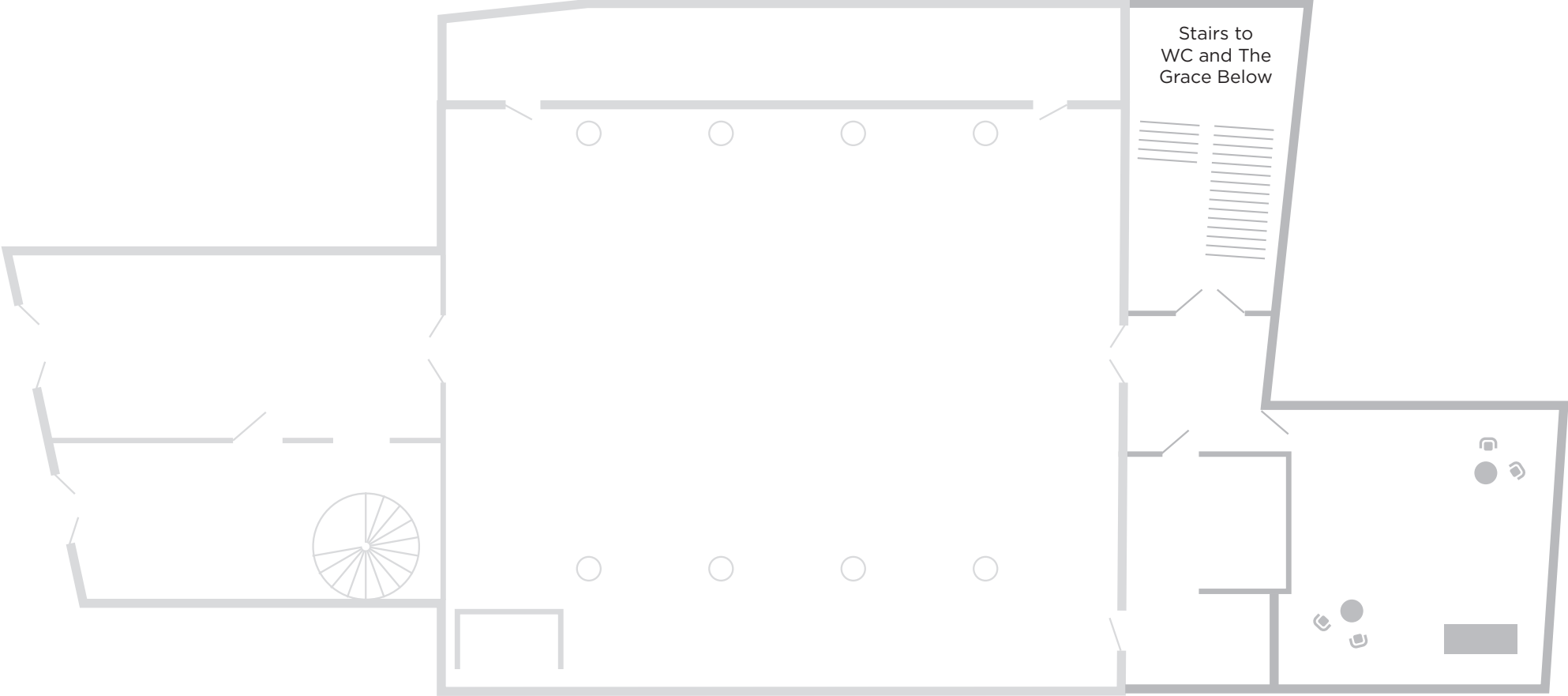
DIRECTOR'S OBSERVATORY - DINNER

Based on 40 guests



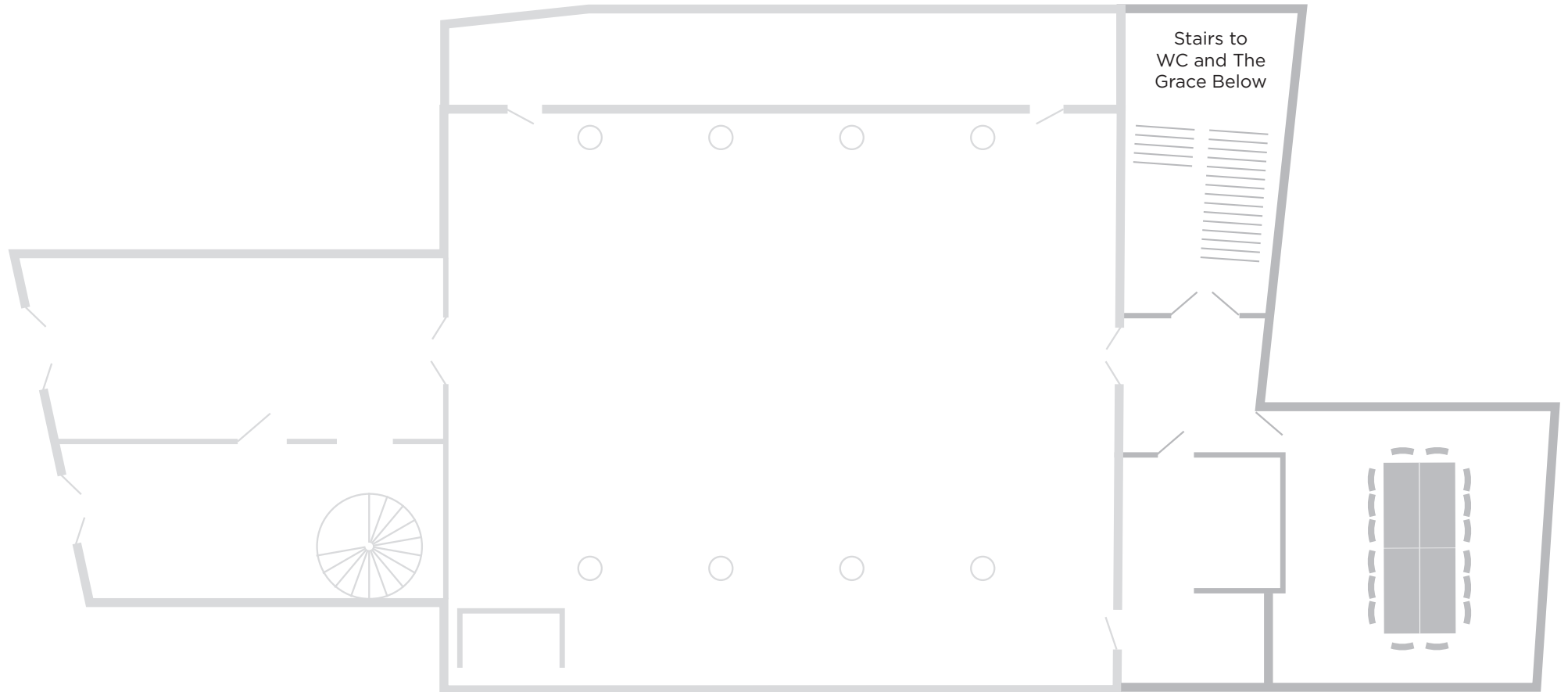
THE ARCHIVES - RECEPTION

Based on 60 guests



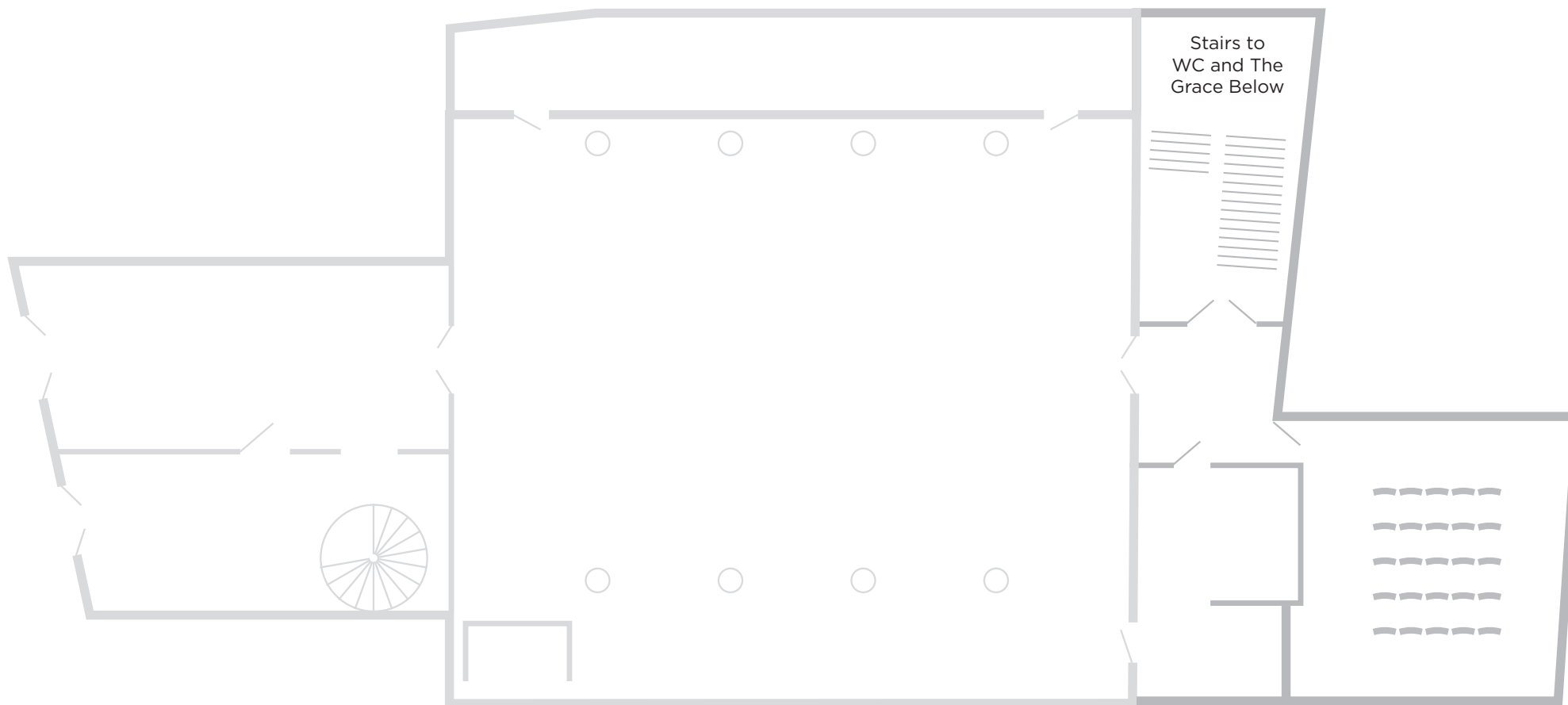
THE ARCHIVES - BANQUET/BOARDROOM

Based on 16 guests



THE ARCHIVES - THEATRE STYLE

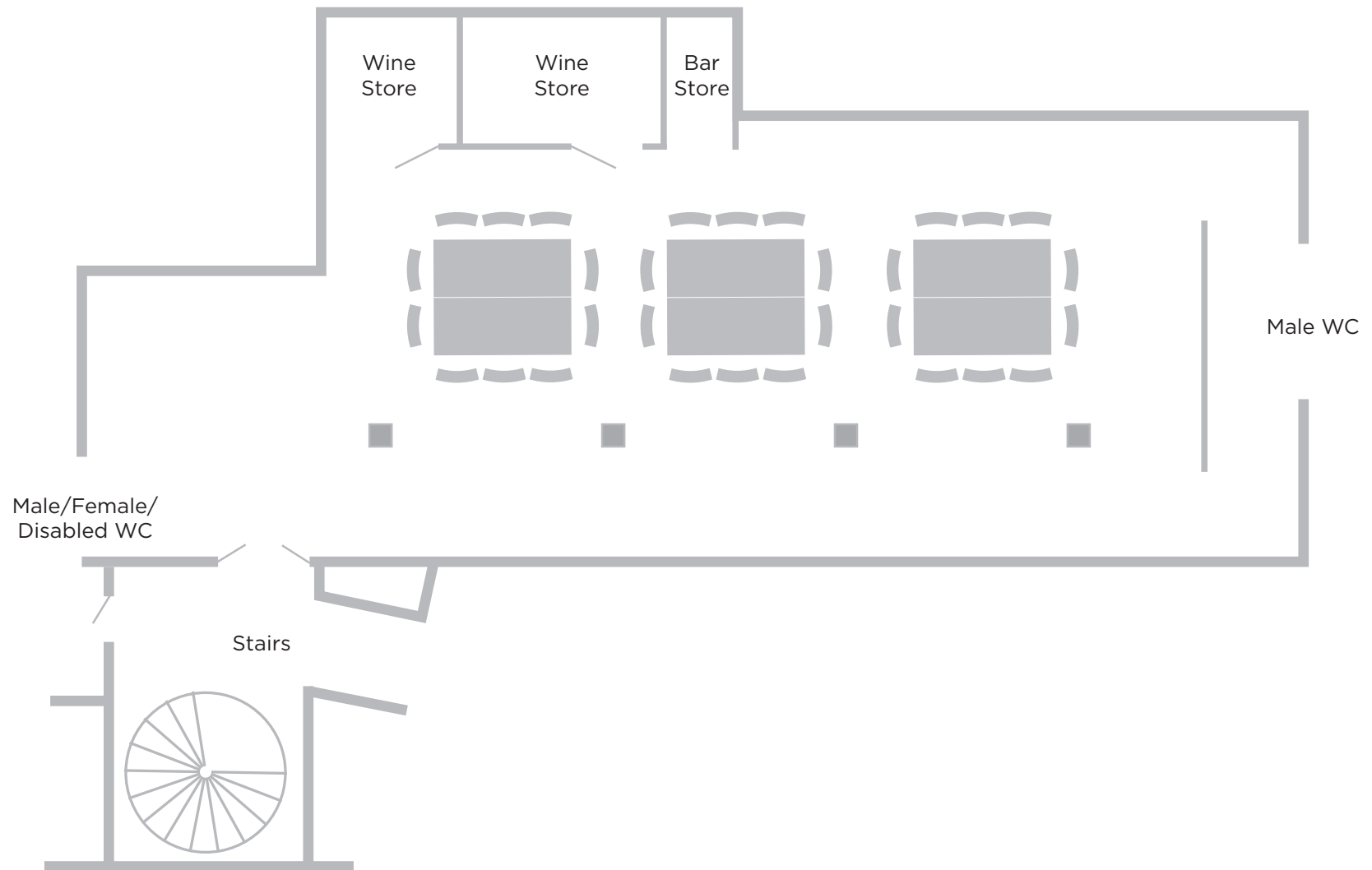
Based on 25 guests



THE GRACE BELOW =

DINNER

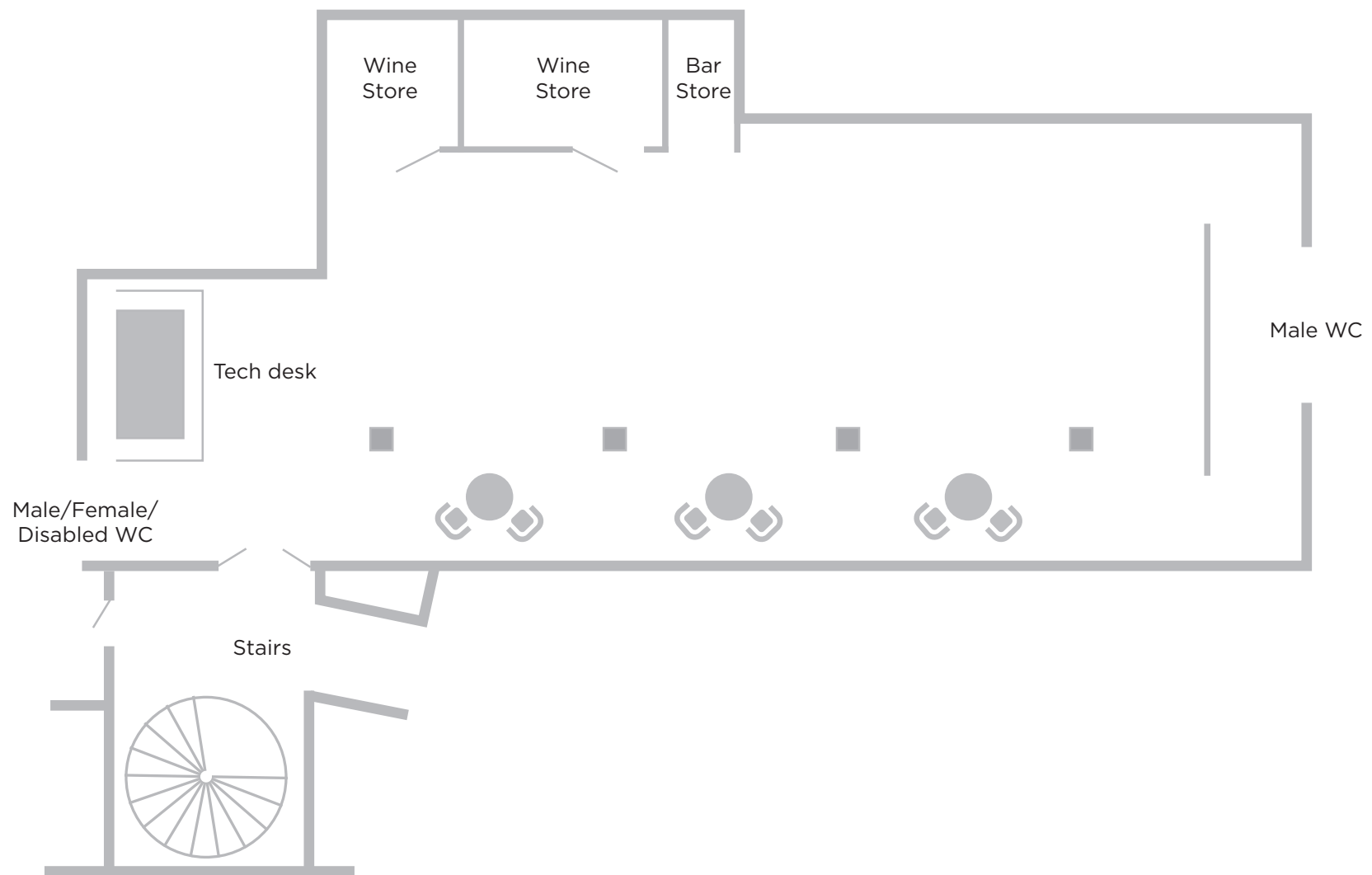
Based on 30 guests



THE GRACE BELOW -

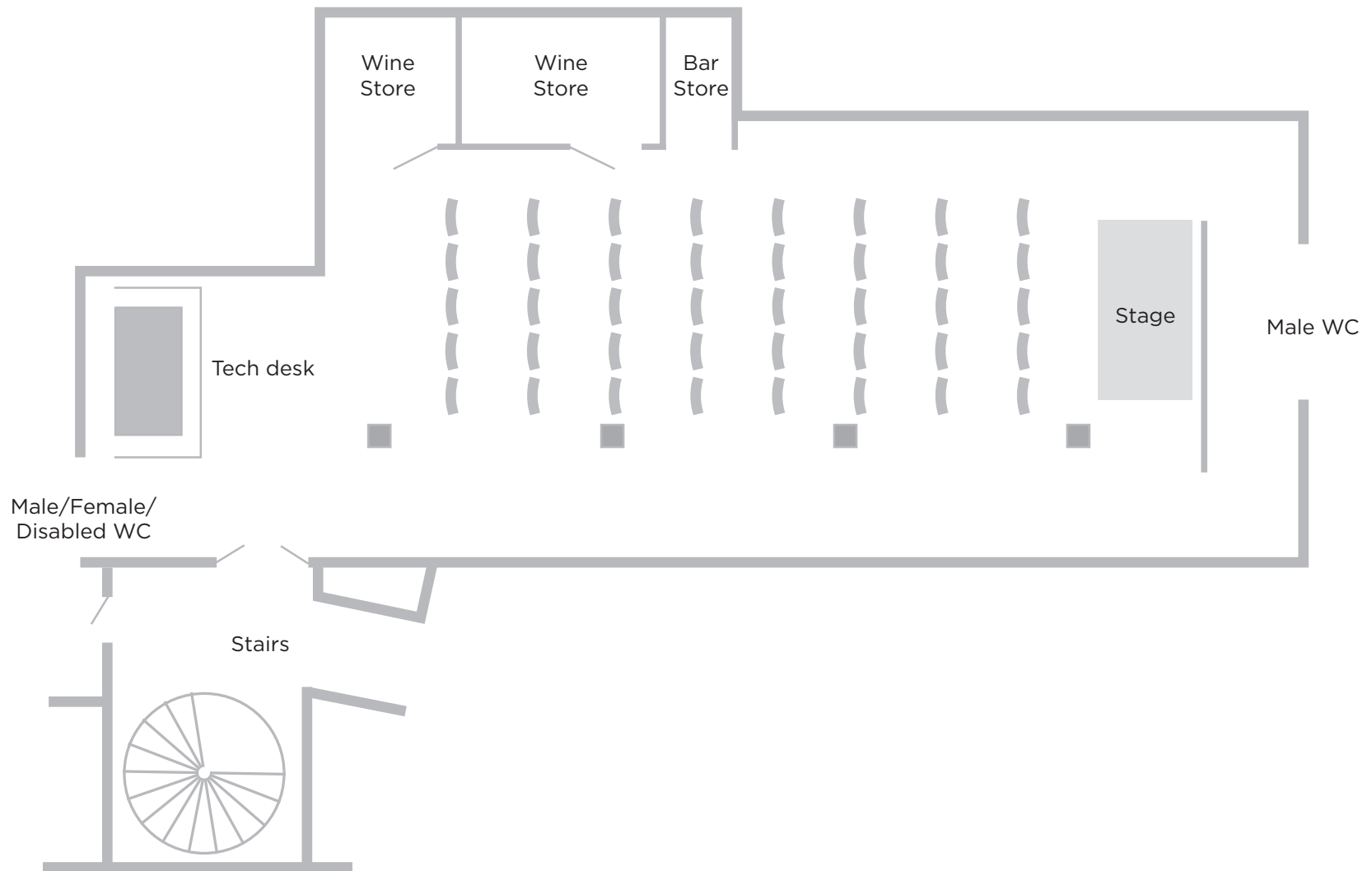
RECEPTION

Based on 120 guests



THE GRACE BELOW - THEATRE STYLE

Based on 30 guests



THE GRACE BELOW - BANQUET/BOARDROOM

Based on 34 guests

